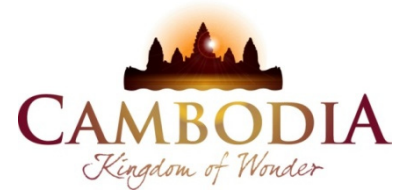




KINGDOM OF CAMBODIA  
NATION RELIGION KING



# TOURISM STATISTICS REPORT

# December 2015

**MINISTRY OF TOURISM**

Statistics and Tourism Information Department

No. A3, Street 169, Sangkat Veal Vong, Khan 7 Makara, Phnom Penh, Cambodia.

Fax: +855 23 885003

E-mail: [kong@mot.gov.kh](mailto:kong@mot.gov.kh)

Web site: [www.mot.gov.kh](http://www.mot.gov.kh)

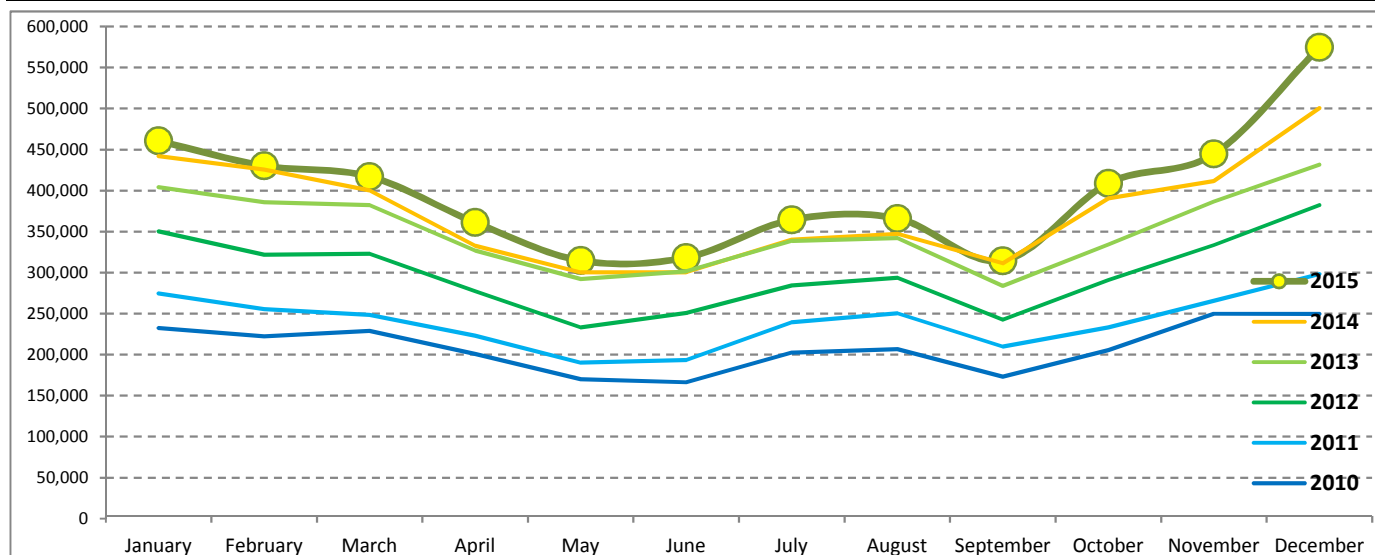
## Tourism Highlights

### International Tourist Arrivals, Average Length of Stays, Hotel Occupancy & Tourism Receipts 1993 - 2015

Years	Int'l Tourist Arrivals		Average Length	Hotel Occupancy	Tourism Receipts
	Number	Change (%)	of Stays (Days)	(%)	(Million US\$)
1993	118,183	-	N/A	N/A	N/A
1994	176,617	49.4	N/A	N/A	N/A
1995	219,680	24.4	8.00	37.0	100
1996	260,489	18.6	7.50	40.0	118
1997	218,843	-16.0	6.40	30.0	103
1998	286,524	30.9	5.20	40.0	166
1999	367,743	28.3	5.50	44.0	190
2000	466,365	26.8	5.50	45.0	228
2001	604,919	29.7	5.50	48.0	304
2002	786,524	30.0	5.80	50.0	379
2003	701,014	-10.9	5.50	50.0	347
2004	1,055,202	50.5	6.30	52.0	578
2005	1,421,615	34.7	6.30	52.0	832
2006	1,700,041	19.6	6.50	54.8	1,049
2007	2,015,128	18.5	6.50	54.8	1,400
2008	2,125,465	5.5	6.65	62.7	1,595
2009	2,161,577	1.7	6.45	63.6	1,561
2010	2,508,289	16.0	6.45	65.7	1,786
2011	2,881,862	14.9	6.50	66.2	1,912
2012	3,584,307	24.4	6.30	68.5	2,210
2013	4,210,165	17.5	6.75	69.5	2,547
2014	4,502,775	7.0	6.50	67.6	2,736
2015	4,775,231	6.1	6.80	70.2	3,012

### International Tourist Arrivals to Cambodia

Months	2010	2011	2012	2013	2014	2015	Change (%)				
							11/10	12/11	13/12	14/13	15*/14
<b>Q1</b>	<b>683,692</b>	<b>778,467</b>	<b>995,210</b>	<b>1,172,072</b>	<b>1,267,922</b>	<b>1,307,836</b>	<b>13.9</b>	<b>27.8</b>	<b>17.8</b>	<b>8.2</b>	<b>3.1</b>
January	232,590	274,471	350,257	404,106	442,045	460,577	18.0	27.6	15.4	9.4	4.2
February	222,354	255,499	321,870	385,760	425,801	430,207	14.9	26.0	19.8	10.4	1.0
March	228,748	248,497	323,083	382,206	400,076	417,052	8.6	30.0	18.3	4.7	4.2
<b>Q2</b>	<b>537,464</b>	<b>606,562</b>	<b>761,442</b>	<b>920,527</b>	<b>933,446</b>	<b>994,154</b>	<b>12.9</b>	<b>25.5</b>	<b>20.9</b>	<b>1.4</b>	<b>6.5</b>
April	200,965	223,032	277,304	327,000	332,690	361,139	11.0	24.3	17.9	1.7	8.6
May	170,164	190,258	233,220	292,115	300,302	314,748	11.8	22.6	25.3	2.8	4.8
June	166,335	193,272	250,918	301,412	300,454	318,267	16.2	29.8	20.1	-0.3	5.9
<b>Q3</b>	<b>582,024</b>	<b>699,760</b>	<b>820,888</b>	<b>964,612</b>	<b>998,690</b>	<b>1,044,880</b>	<b>20.2</b>	<b>17.3</b>	<b>17.5</b>	<b>3.5</b>	<b>4.6</b>
July	202,349	239,527	284,282	338,761	340,091	364,325	18.4	18.7	19.2	0.4	7.1
August	206,563	250,429	293,859	342,064	347,211	366,096	21.2	17.3	16.4	1.5	5.4
September	173,112	209,804	242,747	283,787	311,388	314,459	21.2	15.7	16.9	9.7	1.0
<b>Q4</b>	<b>705,109</b>	<b>797,073</b>	<b>1,006,767</b>	<b>1,152,954</b>	<b>1,302,717</b>	<b>1,428,361</b>	<b>13.0</b>	<b>26.3</b>	<b>14.5</b>	<b>13.0</b>	<b>9.6</b>
October	205,515	233,190	290,959	334,410	390,637	408,922	13.5	24.8	14.9	16.8	4.7
November	249,892	265,539	333,482	386,737	411,501	444,640	6.3	25.6	16.0	6.4	8.1
December	249,702	298,344	382,326	431,807	500,579	574,799	19.5	28.1	12.9	15.9	14.8
<b>Total</b>	<b>2,508,289</b>	<b>2,881,862</b>	<b>3,584,307</b>	<b>4,210,165</b>	<b>4,502,775</b>	<b>4,775,231</b>	<b>14.9</b>	<b>24.4</b>	<b>17.5</b>	<b>7.0</b>	<b>6.1</b>



Source: Statistics and Tourism Information Department, MOT

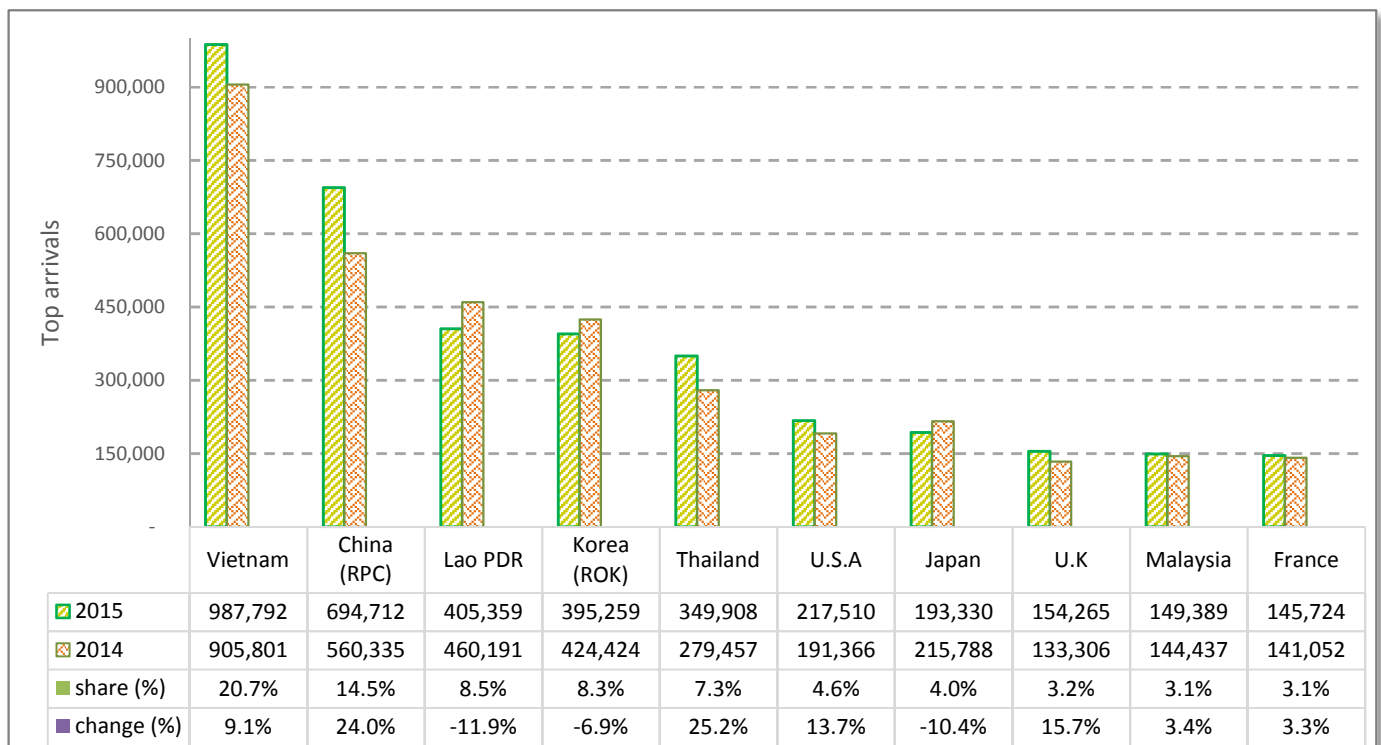
# CAMBODIA: TOURISM STATISTICS REPORT IN 2015

## I. INBOUND TOURISM

### 1. International tourist arrivals in January - December 2015

	Inbound tourism		share (%)		change (%)
	2014	2015	2014	2015	2015*/14
<b>Air</b>	<b>2,273,493</b>	<b>2,476,001</b>	<b>50.5</b>	<b>51.9</b>	<b>8.9</b>
Phnom Penh Int'l Airport (PNH)	917,800	1,061,034	20.4	22.2	15.6
Siem Reap Int'l Airport (REP)	1,355,693	1,414,967	30.1	29.6	4.4
<b>Land and Water ways</b>	<b>2,229,282</b>	<b>2,299,230</b>	<b>49.5</b>	<b>48.1</b>	<b>3.1</b>
Land	2,132,332	2,151,138	47.4	45.0	0.9
Waterway	96,950	148,092	2.2	3.1	52.8
<b>Total</b>	<b>4,502,775</b>	<b>4,775,231</b>	<b>100.0</b>	<b>100.0</b>	<b>6.1</b>

### 2. Top ten markets arrivals in January - December 2015



## II. OUTBOUND TOURISM

### Outbound tourism in January - December 2015

	Outbound tourism		change (%)
	2014	2015	2015*/14
Cambodian Outbound Tourists	955,909	1,194,018	24.9
International Tourists Departure	4,211,424	4,225,619	0.3

## III. INTERNAL TOURISM

### Foreign visitor arrivals to the regions in January - December 2015

	Arrivals		share (%)		change (%)
	2014	2015	2014	2015	2015*/14
Phnom Penh & Surrounding	2,151,838	2,650,368	41.7	48.6	23.2
Siem Reap Angkor	2,350,937	2,124,863	45.5	39.0	-9.6
Coastal Areas	600,367	610,458	11.6	11.2	1.7
Eco-tourism Areas	60,031	63,261	1.2	1.2	5.4
<b>Total</b>	<b>5,163,173</b>	<b>5,448,950</b>	<b>100.0</b>	<b>100.0</b>	<b>5.5</b>

## International Tourist Arrivals to Cambodia by Country of Residence in January - December 2015

(by all means of transportation)

Regions Country of Residence	2014	2015			Total	Female	Share	Change
		Purposes of Visit					(%)	(%)
		Holiday	Business	Others	2015*	2015*/14		
<b>Grand Total</b>	<b>4,502,775</b>	<b>4,299,373</b>	<b>299,607</b>	<b>176,251</b>	<b>4,775,231</b>	<b>1,999,006</b>	<b>100.0</b>	<b>6.1</b>
<b>Asia and the Pacific</b>	<b>3,495,481</b>	<b>3,320,271</b>	<b>256,802</b>	<b>139,615</b>	<b>3,716,688</b>	<b>1,532,043</b>	<b>77.8</b>	<b>6.3</b>
<b>ASEAN (Southeast Asia)</b>	<b>1,991,897</b>	<b>1,887,646</b>	<b>97,390</b>	<b>112,722</b>	<b>2,097,758</b>	<b>849,133</b>	<b>43.9</b>	<b>5.3</b>
Brunei Darussalam	990	711	25	116	852	350	0.0	-13.9
Indonesia	35,655	27,787	12,853	2,507	43,147	11,946	0.9	21.0
Lao PDR	460,191	396,954	154	8,251	405,359	166,888	8.5	-11.9
Malaysia	144,437	139,549	8,820	1,020	149,389	47,971	3.1	3.4
Myanmar	6,036	7,840	547	578	8,965	3,793	0.2	48.5
Philippines	93,475	71,732	10,443	2,502	84,677	46,992	1.8	-9.4
Singapore	65,855	64,234	2,847	588	67,669	22,696	1.4	2.8
Thailand	279,457	315,960	16,972	16,976	349,908	138,411	7.3	25.2
Vietnam	905,801	862,879	44,729	80,184	987,792	410,086	20.7	9.1
<b>Northeast Asia</b>	<b>1,308,281</b>	<b>1,246,192</b>	<b>147,054</b>	<b>15,419</b>	<b>1,408,665</b>	<b>598,084</b>	<b>29.5</b>	<b>7.7</b>
China	560,335	596,737	91,135	6,840	694,712	309,726	14.5	24.0
Hong Kong (China)	9,847	14,537	198	52	14,787	6,952	0.3	50.2
Japan	215,788	167,355	22,174	3,801	193,330	74,722	4.0	-10.4
Korea (ROK)	424,424	374,497	16,768	3,994	395,259	162,969	8.3	-6.9
Macau (China)		361	11	20	392	156	0.0	
Mongolia	359	391	33	34	458	250	0.0	27.6
Taiwan (China)	97,528	92,314	16,735	678	109,727	43,309	2.3	12.5
<b>Southern Asia</b>	<b>35,730</b>	<b>36,778</b>	<b>4,846</b>	<b>3,266</b>	<b>44,890</b>	<b>12,237</b>	<b>0.9</b>	<b>25.6</b>
Afghanistan	214	75	9	37	121	30	0.0	-43.5
Bangladesh	1,997	1,484	357	216	2,057	315	0.0	3.0
Bhutan	110	163	9	57	229	88	0.0	108.2
India	28,529	31,246	3,136	2,289	36,671	10,516	0.8	28.5
Nepal	1,742	1,676	327	355	2,358	600	0.0	35.4
Pakistan	1,325	968	401	152	1,521	270	0.0	14.8
Sri Lanka	1,813	1,166	607	160	1,933	418	0.0	6.6
<b>Oceania</b>	<b>155,578</b>	<b>144,326</b>	<b>6,975</b>	<b>6,659</b>	<b>157,960</b>	<b>69,583</b>	<b>3.3</b>	<b>1.5</b>
Australia	134,167	123,390	5,889	5,469	134,748	59,341	2.8	0.4
Fiji	152	124	44	23	191	62	0.0	25.7
New Zealand	21,259	20,812	1,042	1,167	23,021	10,180	0.5	8.3
Other Asia & the Pacific	3,995	5,329	537	1,549	7,415	3,006	0.2	85.6
<b>Europe</b>	<b>712,009</b>	<b>672,703</b>	<b>28,883</b>	<b>17,548</b>	<b>719,134</b>	<b>314,534</b>	<b>15.1</b>	<b>1.0</b>
<b>Northern Europe</b>	<b>189,626</b>	<b>198,045</b>	<b>10,712</b>	<b>2,900</b>	<b>211,657</b>	<b>88,285</b>	<b>4.4</b>	<b>11.6</b>
Denmark	11,766	10,933	379	241	11,553	4,811	0.2	-1.8
Finland	7,232	6,785	306	155	7,246	2,806	0.2	0.2
Iceland	832	682	15	30	727	270	0.0	-12.6
Ireland	9,542	10,676	390	134	11,200	4,970	0.2	17.4
Norway	9,813	9,146	239	136	9,521	4,145	0.2	-3.0
Sweden	17,135	16,277	567	301	17,145	6,982	0.4	0.1
United Kingdom	133,306	143,546	8,816	1,903	154,265	64,301	3.2	15.7
<b>Western Europe</b>	<b>297,319</b>	<b>296,783</b>	<b>12,700</b>	<b>9,586</b>	<b>319,069</b>	<b>138,202</b>	<b>6.7</b>	<b>7.3</b>
Austria	8,842	9,673	256	151	10,080	4,262	0.2	14.0
Belgium	15,891	16,291	673	488	17,452	7,259	0.4	9.8
France	141,052	132,032	7,437	6,255	145,724	64,147	3.1	3.3
Germany	84,143	90,117	2,286	1,637	94,040	40,261	2.0	11.8
Luxembourg	521	654	12	24	690	289	0.0	32.4
Monaco	110	64	8	17	89	30	0.0	-19.1
Netherlands	26,553	27,164	1,284	567	29,015	12,497	0.6	9.3
Switzerland	20,207	20,788	744	447	21,979	9,457	0.5	8.8
<b>Central / Eastern Europe</b>	<b>148,428</b>	<b>93,878</b>	<b>2,780</b>	<b>2,441</b>	<b>99,099</b>	<b>49,320</b>	<b>2.1</b>	<b>-33.2</b>
Bulgaria	1,151	1,570	35	166	1,771	797	0.0	53.9
Czech Republic	5,402	5,419	80	104	5,603	2,377	0.1	3.7
Estonia	1,855	1,879	43	30	1,952	875	0.0	5.2
Hungary	3,476	3,916	127	147	4,190	1,812	0.1	20.5
Kazakhstan	2,702	1,929	264	42	2,235	1,148	0.0	-17.3
Kyrgyzstan		121	21	19	161	68	0.0	
Latvia		1,007	26	48	1,081	497	0.0	
Lithuania	1,629	1,783	28	50	1,861	906	0.0	14.2
Poland	12,876	13,592	145	271	14,008	6,840	0.3	8.8
Romania	1,994	2,047	74	293	2,414	1,145	0.1	21.1
Russian Federation	108,601	53,161	1,596	743	55,500	28,850	1.2	-48.9
Slovakia	2,387	2,132	55	79	2,266	957	0.0	-5.1
Ukraine	5,753	4,692	214	416	5,322	2,588	0.1	-7.5
Uzbekistan	602	630	72	33	735	460	0.0	22.1

Source: Statistics and Tourism Information Department, MOT

## International Tourist Arrivals to Cambodia by Country of Residence in January - December 2015

(by all means of transportation)

Regions Country of Residence	2014	2015			Total	Female	Share	Change
		Purposes of Visit					(%)	(%)
		Holiday	Business	Others	2015*	2015*/14		
<b>Grand Total</b>	<b>4,502,775</b>	<b>4,299,373</b>	<b>299,607</b>	<b>176,251</b>	<b>4,775,231</b>	<b>1,999,006</b>	<b>100.0</b>	<b>6.1</b>
<b>Southern Europe</b>	<b>73,498</b>	<b>80,355</b>	<b>2,354</b>	<b>1,545</b>	<b>84,254</b>	<b>36,510</b>	<b>1.8</b>	<b>14.6</b>
Croatia	837	1,059	36	209	1,304	512	0.0	55.8
Greece	1,272	1,473	71	51	1,595	632	0.0	25.4
Italy	29,548	30,812	963	402	32,177	13,376	0.7	8.9
Malta		422	11	29	462	173	0.0	
Portugal	4,638	5,638	178	131	5,947	2,706	0.1	28.2
Serbia	707	650	24	189	863	354	0.0	22.1
Slovenia	1,017	1,160	48	49	1,257	553	0.0	23.6
Spain	30,678	34,058	546	243	34,847	16,152	0.7	13.6
Turkey	4,801	5,083	477	242	5,802	2,052	0.1	20.8
Other Europe	3,138	3,642	337	1,076	5,055	2,217	0.1	61.1
<b>Americas</b>	<b>276,669</b>	<b>285,601</b>	<b>12,229</b>	<b>17,696</b>	<b>315,526</b>	<b>143,858</b>	<b>6.6</b>	<b>14.0</b>
<b>North America</b>	<b>249,217</b>	<b>253,747</b>	<b>11,501</b>	<b>16,224</b>	<b>281,472</b>	<b>127,934</b>	<b>5.9</b>	<b>12.9</b>
Canada	52,264	52,339	2,419	2,076	56,834	25,921	1.2	8.7
Mexico	5,587	6,943	55	130	7,128	3,765	0.1	27.6
United States	191,366	194,465	9,027	14,018	217,510	98,248	4.6	13.7
<b>Central America</b>	<b>420</b>	<b>536</b>	<b>35</b>	<b>149</b>	<b>720</b>	<b>295</b>	<b>0.0</b>	
Costa Rica	420	413	15	37	465	211	0.0	10.7
Honduras		40	11	61	112	43	0.0	
Jamaica		83	9	51	143	41	0.0	
<b>South America</b>	<b>25,167</b>	<b>28,762</b>	<b>432</b>	<b>512</b>	<b>29,706</b>	<b>14,179</b>	<b>0.6</b>	<b>18.0</b>
Argentina	5,737	7,762	50	58	7,870	3,716	0.2	37.2
Brazil	9,916	10,307	156	155	10,618	4,962	0.2	7.1
Chile	5,270	4,872	43	53	4,968	2,476	0.1	-5.7
Colombia	2,231	2,753	77	73	2,903	1,446	0.1	30.1
Ecuador	372	511	23	26	560	274	0.0	50.5
Peru	902	971	26	63	1,060	509	0.0	17.5
Uruguay	739	949	15	40	1,004	464	0.0	35.9
Venezuela		637	42	44	723	332	0.0	
Other America	1,865	2,556	261	811	3,628	1,450	0.1	94.5
<b>Africa</b>	<b>6,212</b>	<b>7,240</b>	<b>1,125</b>	<b>873</b>	<b>9,238</b>	<b>3,517</b>	<b>0.2</b>	<b>48.7</b>
<b>North Africa</b>	<b>84</b>	<b>687</b>	<b>63</b>	<b>93</b>	<b>843</b>	<b>312</b>	<b>0.0</b>	
Morocco		433	42	30	505	202	0.0	
Sudan	84	83	9	39	131	40	0.0	56.0
Tunisia		171	12	24	207	70	0.0	
<b>Subsaharan Africa</b>	<b>5,681</b>	<b>5,954</b>	<b>995</b>	<b>593</b>	<b>7,542</b>	<b>2,887</b>	<b>0.2</b>	<b>32.8</b>
Cameroon	132	153	14	35	202	56	0.0	53.0
Congo	59	70	9	28	107	27	0.0	81.4
Ghana	95	67	13	13	93	19	0.0	-2.1
Kenya	250	290	18	36	344	163	0.0	37.6
Liberia	49	35	8	12	55	12	0.0	12.2
Nigeria	644	465	557	47	1,069	113	0.0	66.0
South Africa	4,374	4,643	339	354	5,336	2,388	0.1	22.0
Tanzania		62	8	23	93	27	0.0	
Uganda	78	95	10	16	121	33	0.0	55.1
Zimbabwe		74	19	29	122	49	0.0	
Other Africa	447	599	67	187	853	318	0.0	90.8
<b>Middle East</b>	<b>12,404</b>	<b>13,558</b>	<b>568</b>	<b>519</b>	<b>14,645</b>	<b>5,054</b>	<b>0.3</b>	<b>18.1</b>
Egypt	341	490	68	29	587	156	0.0	72.1
Iran	730	458	45	22	525	165	0.0	-28.1
Iraq	106	123	19	27	169	36	0.0	59.4
Israel	9,317	9,234	267	56	9,557	3,977	0.2	2.6
Jordan		272	37	31	340	60	0.0	
Kuwait	876	852	9	55	916	50	0.0	4.6
Oman	160	185	6	23	214	31	0.0	33.8
Palestine	73	59	9	16	84	11	0.0	15.1
Qatar	67	83	8	26	117	33	0.0	74.6
Saudi Arabia	164	252	12	43	307	26	0.0	87.2
Syria		235	9	16	260	48	0.0	
United Arab Emirates	104	310	29	28	367	89	0.0	252.9
Yemen	150	414	10	28	452	135	0.0	201.3
Other Middle East	316	591	40	119	750	237	0.0	137.3

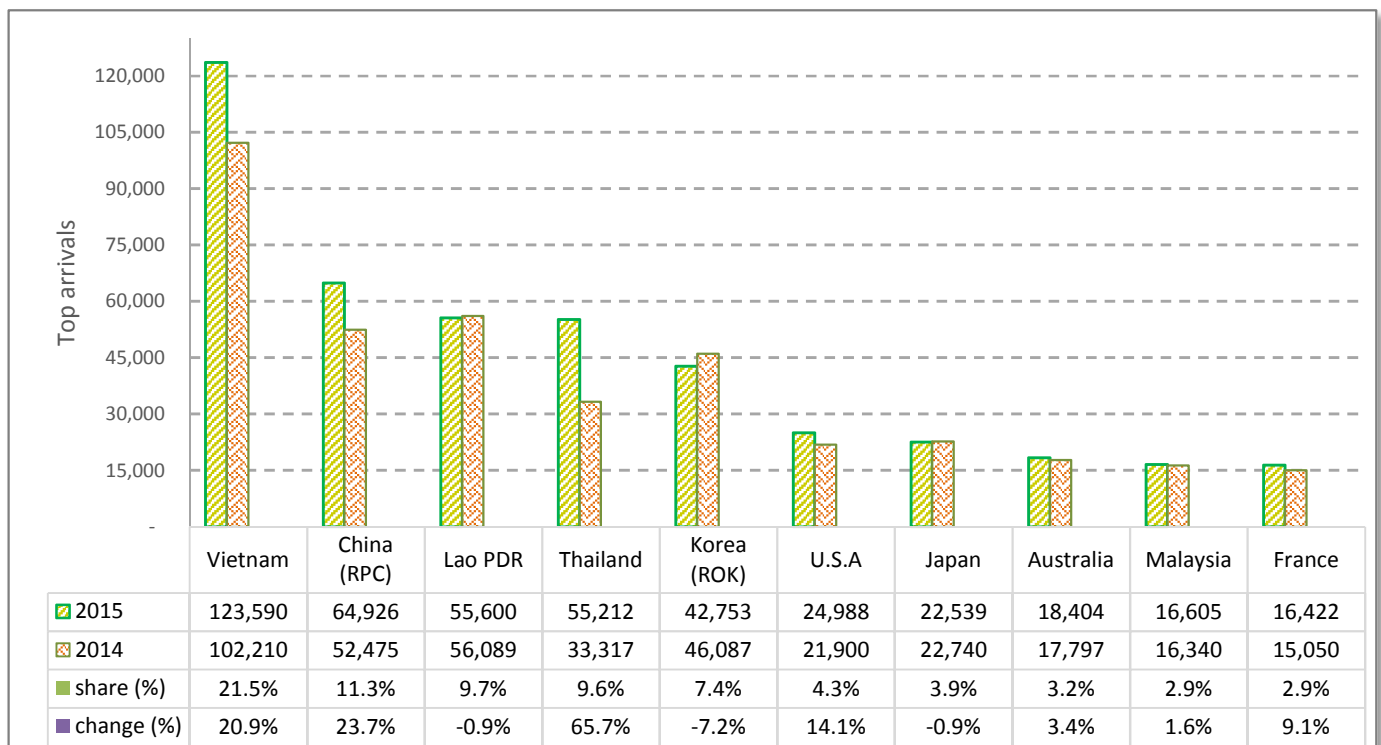
# CAMBODIA: TOURISM STATISTICS REPORT IN DECEMBER 2015

## I. INBOUND TOURISM

### 1. International tourist arrivals in December 2015

	Inbound tourism		share (%)		change (%)
	2014	2015	2014	2015	2015*/14
<b>Air</b>	<b>245,616</b>	<b>255,057</b>	<b>49.1</b>	<b>44.4</b>	<b>3.8</b>
Phnom Penh Int'l Airport (PNH)	92,195	99,103	18.4	17.2	7.5
Siem Reap Int'l Airport (REP)	153,421	155,954	30.6	27.1	1.7
<b>Land and Water ways</b>	<b>254,963</b>	<b>319,742</b>	<b>50.9</b>	<b>55.6</b>	<b>25.4</b>
Land	240,970	298,926	48.1	52.0	24.1
Waterway	13,993	20,816	2.8	3.6	48.8
<b>Total</b>	<b>500,579</b>	<b>574,799</b>	<b>100.0</b>	<b>100.0</b>	<b>14.8</b>

### 2. Top ten markets arrivals in December 2015



## II. OUTBOUND TOURISM

### Outbound tourism in December 2015

	Outbound tourism		change (%)
	2014	2015	2015*/14
Cambodian Outbound Tourists	79,837	99,420	24.5
International Tourists Departure	403,304	386,136	-4.3

## III. INTERNAL TOURISM

### Foreign visitor arrivals to the regions in December 2015

	Arrivals		share (%)		change (%)
	2014	2015	2014	2015	2015*/14
Phnom Penh & Surrounding	250,763	351,582	42.6	55.3	40.2
Siem Reap Angkor	249,816	223,217	42.5	35.1	-10.6
Coastal Areas	81,949	54,603	13.9	8.6	-33.4
Eco-tourism Areas	5,541	6,365	0.9	1.0	14.9
<b>Total</b>	<b>588,069</b>	<b>635,767</b>	<b>100.0</b>	<b>100.0</b>	<b>8.1</b>

## International Tourist Arrivals to Cambodia by Country of Residence in December 2015

(by all means of transportation)

Regions Country of Residence	2014	2015			Total	Female	Share	Change
		Purposes of Visit					(%)	(%)
		Holiday	Business	Others			2015*	2015*/14
<b>Grand Total</b>	<b>500,579</b>	<b>519,163</b>	<b>23,342</b>	<b>32,294</b>	<b>574,799</b>	<b>228,172</b>	<b>100.0</b>	<b>14.8</b>
<b>Asia and the Pacific</b>	<b>387,933</b>	<b>406,660</b>	<b>20,243</b>	<b>23,104</b>	<b>450,007</b>	<b>174,704</b>	<b>78.3</b>	<b>16.0</b>
<b>ASEAN (Southeast Asia)</b>	<b>230,253</b>	<b>254,830</b>	<b>8,419</b>	<b>14,353</b>	<b>277,602</b>	<b>105,834</b>	<b>48.3</b>	<b>20.6</b>
Brunei Darussalam	144	102	3	7	112	38	0.0	-22.2
Indonesia	3,572	3,420	1,030	1,075	5,525	1,884	1.0	54.7
Lao PDR	56,089	54,775	6	819	55,600	16,704	9.7	-0.9
Malaysia	16,340	15,699	743	163	16,605	5,764	2.9	1.6
Myanmar	681	776	41	142	959	395	0.2	40.8
Philippines	10,005	8,287	906	536	9,729	5,264	1.7	-2.8
Singapore	7,895	9,951	235	84	10,270	4,763	1.8	30.1
Thailand	33,317	52,135	1,292	1,785	55,212	24,478	9.6	65.7
Vietnam	102,210	109,685	4,163	9,742	123,590	46,544	21.5	20.9
<b>Northeast Asia</b>	<b>132,277</b>	<b>127,726</b>	<b>10,848</b>	<b>4,516</b>	<b>143,090</b>	<b>57,584</b>	<b>24.9</b>	<b>8.2</b>
China	52,475	56,086	6,551	2,289	64,926	27,646	11.3	23.7
Hong Kong (China)	1,961	2,768	25	11	2,804	1,409	0.5	43.0
Japan	22,740	19,987	1,735	817	22,539	8,942	3.9	-0.9
Korea (ROK)	46,087	40,437	1,297	1,019	42,753	15,845	7.4	-7.2
Macau (China)		35	2	3	40	12	0.0	
Mongolia	31	49	3	4	56	29	0.0	80.6
Taiwan (China)	8,983	8,364	1,235	373	9,972	3,701	1.7	11.0
<b>Southern Asia</b>	<b>4,017</b>	<b>4,255</b>	<b>404</b>	<b>888</b>	<b>5,547</b>	<b>1,643</b>	<b>1.0</b>	<b>38.1</b>
Afghanistan	8	10	1	13	24	7	0.0	200.0
Bangladesh	111	100	24	22	146	20	0.0	31.5
Bhutan	17	20	1	34	55	18	0.0	223.5
India	3,373	3,739	263	621	4,623	1,464	0.8	37.1
Nepal	178	167	41	151	359	73	0.1	101.7
Pakistan	168	103	40	19	162	23	0.0	-3.6
Sri Lanka	162	116	34	28	178	38	0.0	9.9
<b>Oceania</b>	<b>20,958</b>	<b>17,975</b>	<b>529</b>	<b>3,139</b>	<b>21,643</b>	<b>8,809</b>	<b>3.8</b>	<b>3.3</b>
Australia	17,797	15,477	448	2,479	18,404	7,408	3.2	3.4
Fiji	19	12	2	3	17	6	0.0	-10.5
New Zealand	3,142	2,486	79	657	3,222	1,395	0.6	2.5
Other Asia & the Pacific	428	1,874	43	208	2,125	834	0.4	396.5
<b>Europe</b>	<b>78,459</b>	<b>79,176</b>	<b>2,072</b>	<b>4,209</b>	<b>85,457</b>	<b>35,943</b>	<b>14.9</b>	<b>8.9</b>
<b>Northern Europe</b>	<b>21,339</b>	<b>22,457</b>	<b>660</b>	<b>527</b>	<b>23,644</b>	<b>9,013</b>	<b>4.1</b>	<b>10.8</b>
Denmark	1,082	1,233	28	34	1,295	453	0.2	19.7
Finland	1,291	1,241	21	22	1,284	460	0.2	-0.5
Iceland	88	60	2	3	65	22	0.0	-26.1
Ireland	795	937	36	29	1,002	405	0.2	26.0
Norway	1,078	911	22	30	963	411	0.2	-10.7
Sweden	2,710	2,856	53	65	2,974	1,234	0.5	9.7
United Kingdom	14,295	15,219	498	344	16,061	6,028	2.8	12.4
<b>Western Europe</b>	<b>33,753</b>	<b>36,617</b>	<b>1,020</b>	<b>2,926</b>	<b>40,563</b>	<b>17,232</b>	<b>7.1</b>	<b>20.2</b>
Austria	1,115	1,200	18	41	1,259	540	0.2	12.9
Belgium	1,634	1,886	71	92	2,049	812	0.4	25.4
France	15,050	13,879	563	1,980	16,422	6,884	2.9	9.1
Germany	10,044	13,792	199	540	14,531	6,286	2.5	44.7
Luxembourg	84	101	2	6	109	49	0.0	29.8
Monaco	14	9	1	2	12	3	0.0	-14.3
Netherlands	2,934	3,087	98	102	3,287	1,430	0.6	12.0
Switzerland	2,878	2,663	68	163	2,894	1,228	0.5	0.6
<b>Central / Eastern Europe</b>	<b>15,346</b>	<b>11,302</b>	<b>197</b>	<b>352</b>	<b>11,851</b>	<b>5,854</b>	<b>2.1</b>	<b>-22.8</b>
Bulgaria	187	240	1	32	273	116	0.0	46.0
Czech Republic	680	643	6	12	661	274	0.1	-2.8
Estonia	225	337	2	2	341	167	0.1	51.6
Hungary	553	453	10	22	485	187	0.1	-12.3
Kazakhstan	248	217	15	5	237	116	0.0	-4.4
Kyrgyzstan		16	1	1	18	9	0.0	
Latvia		177	2	4	183	84	0.0	
Lithuania	196	214	2	5	221	102	0.0	12.8
Poland	1,771	1,607	12	26	1,645	771	0.3	-7.1
Romania	316	270	2	64	336	158	0.1	6.3
Russian Federation	10,239	6,330	134	51	6,515	3,429	1.1	-36.4
Slovakia	232	184	3	21	208	78	0.0	-10.3
Ukraine	630	554	6	104	664	334	0.1	5.4
Uzbekistan	69	60	1	3	64	29	0.0	-7.2

Source: Statistics and Tourism Information Department, MOT

## International Tourist Arrivals to Cambodia by Country of Residence in December 2015

(by all means of transportation)

Regions Country of Residence	2014	2015			Total	Female	Share	Change
		Purposes of Visit					(%)	(%)
		Holiday	Business	Others			2015*	2015*/14
<b>Grand Total</b>	<b>500,579</b>	<b>519,163</b>	<b>23,342</b>	<b>32,294</b>	<b>574,799</b>	<b>228,172</b>	<b>100.0</b>	<b>14.8</b>
<b>Southern Europe</b>	<b>7,675</b>	<b>7,937</b>	<b>171</b>	<b>307</b>	<b>8,415</b>	<b>3,459</b>	<b>1.5</b>	<b>9.6</b>
Croatia	161	158	3	25	186	71	0.0	15.5
Greece	193	179	6	5	190	85	0.0	-1.6
Italy	3,630	4,024	78	100	4,202	1,693	0.7	15.8
Malta		42	1	3	46	11	0.0	
Portugal	669	668	15	34	717	328	0.1	7.2
Serbia	83	106	1	70	177	71	0.0	113.3
Slovenia	176	162	4	2	168	79	0.0	-4.5
Spain	2,217	2,131	35	32	2,198	940	0.4	-0.9
Turkey	546	467	28	36	531	181	0.1	-2.7
Other Europe	346	863	24	97	984	385	0.2	184.4
<b>Americas</b>	<b>31,518</b>	<b>30,172</b>	<b>887</b>	<b>4,741</b>	<b>35,800</b>	<b>16,165</b>	<b>6.2</b>	<b>13.6</b>
<b>North America</b>	<b>28,637</b>	<b>26,479</b>	<b>842</b>	<b>4,617</b>	<b>31,938</b>	<b>14,537</b>	<b>5.6</b>	<b>11.5</b>
Canada	5,976	5,301	184	610	6,095	2,677	1.1	2.0
Mexico	761	821	1	33	855	405	0.1	12.4
United States	21,900	20,357	657	3,974	24,988	11,455	4.3	14.1
<b>Central America</b>	<b>64</b>	<b>79</b>	<b>3</b>	<b>6</b>	<b>88</b>	<b>35</b>	<b>0.0</b>	
Costa Rica	64	68	1	2	71	30	0.0	10.9
Honduras		3	1	2	6	2	0.0	
Jamaica		8	1	2	11	3	0.0	
<b>South America</b>	<b>2,608</b>	<b>2,997</b>	<b>24</b>	<b>84</b>	<b>3,105</b>	<b>1,319</b>	<b>0.5</b>	<b>19.1</b>
Argentina	355	783	4	14	801	349	0.1	125.6
Brazil	1,413	1,318	10	29	1,357	535	0.2	-4.0
Chile	377	388	2	7	397	187	0.1	5.3
Colombia	266	258	3	10	271	132	0.0	1.9
Ecuador	58	55	1	3	59	26	0.0	1.7
Peru	119	92	2	18	112	42	0.0	-5.9
Uruguay	20	43	1	2	46	15	0.0	130.0
Venezuela		60	1	1	62	33	0.0	
Other America	209	617	18	34	669	274	0.1	220.1
<b>Africa</b>	<b>1,122</b>	<b>1,356</b>	<b>91</b>	<b>154</b>	<b>1,601</b>	<b>641</b>	<b>0.3</b>	<b>42.7</b>
<b>North Africa</b>	<b>13</b>	<b>87</b>	<b>6</b>	<b>7</b>	<b>100</b>	<b>39</b>	<b>0.0</b>	<b>669.2</b>
Morocco		50	4	3	57	22	0.0	
Sudan	13	5	1	2	8	1	0.0	-38.5
Tunisia		32	1	2	35	16	0.0	
<b>Subsaharan Africa</b>	<b>1,048</b>	<b>1,086</b>	<b>76</b>	<b>121</b>	<b>1,283</b>	<b>508</b>	<b>0.2</b>	<b>22.4</b>
Cameroon	9	14	1	2	17	4	0.0	88.9
Congo	12	8	1	2	11	3	0.0	-8.3
Ghana	8	5	1	1	7	1	0.0	-12.5
Kenya	30	55	1	6	62	30	0.0	106.7
Liberia	17	1	1	1	3	0	0.0	-82.4
Nigeria	54	33	45	3	81	5	0.0	50.0
South Africa	905	942	20	95	1,057	447	0.2	16.8
Tanzania		10	1	2	13	6	0.0	
Uganda	13	8	3	1	12	3	0.0	-7.7
Zimbabwe		10	2	8	20	9	0.0	
Other Africa	61	183	9	26	218	94	0.0	257.4
<b>Middle East</b>	<b>1,547</b>	<b>1,799</b>	<b>49</b>	<b>86</b>	<b>1,934</b>	<b>719</b>	<b>0.3</b>	<b>25.0</b>
Egypt	44	64	1	1	66	18	0.0	50.0
Iran	135	75	7	9	91	26	0.0	-32.6
Iraq	7	14	6	4	24	7	0.0	242.9
Israel	1,190	1,217	23	10	1,250	542	0.2	5.0
Jordan		14	1	10	25	3	0.0	
Kuwait	40	28	1	6	35	4	0.0	-12.5
Oman	21	17	1	2	20	1	0.0	-4.8
Palestine	11	8	1	1	10	1	0.0	-9.1
Qatar	8	7	1	2	10	1	0.0	
Saudi Arabia	13	7	1	12	20	2	0.0	53.8
Syria		25	0	1	26	11	0.0	
United Arab Emirates	13	10	1	1	12	1	0.0	-7.7
Yemen	19	98	2	3	103	35	0.0	442.1
Other Middle East	46	215	3	24	242	67	0.0	426.1